



# KEEP YOUR LOAD COLD WITH THE COLDSAVER INSULATED DOOR

## Whiting Roller Doors ColdSaver Insulated Door

Choose your roller doors wisely. They'll be opened and closed thousands of times, they'll protect the contents of thousands of shipments and they'll directly impact your reputation on the road.

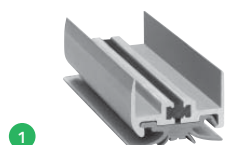
Structurflex is the New Zealand agent for Whiting Roller Doors, a US brand that's globally recognised for superior design and durability. Whiting doors provide the features you need – top, bottom and side seals, heavy-duty panels and hardware, and quick, easy operation.



# WHITING COLDSAVER INSULATED DOOR



Specify the Whiting Coldsaver Door, for use on trucks and trailers carrying goods at extremely low temperatures ( $-7^{\circ}\text{C}$ ). There are no fasteners or aluminum connectors through the door. You can be completely confident with the Whiting Coldsaver, for low temperature control.



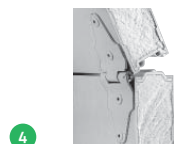
**1** Bottom channel has thermal break and runs entire width of door.



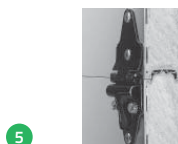
**2** Top closure bracket designed to eliminate need for having 2 tracks to carry top section.



**3** Heavy duty bottom roller bracket designed for easy rolling.



**4** PVC thermal break connects front and back of door. No thru-metal areas to conduct heat or cold through the door.



**5** Panels foamed-in-place with urethane insulation. Each joint is double sealed.



**6** Heavy duty aluminium channel and flexible seal features a rigid landing surface to protect seal.



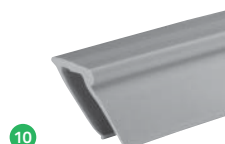
**7** 2 cable balancer with independent springs for each cable. Springs treated with rust preventative.



**8** Cam lock allows one hand operation. Easily accommodates padlock or car seal.



**9** 50mm, 13 gauge galvanized steel track with tongue-and-groove for precision alignment at joints.



**10** Replaceable side seals have 2 legs creating a double seal.



**11** 50mm nylon roller for strength and long life.



**12** Dual durometer PVC top seal forms double seal against the header.



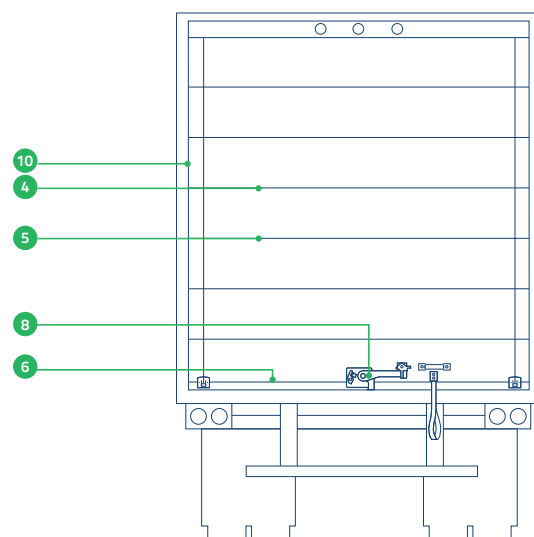
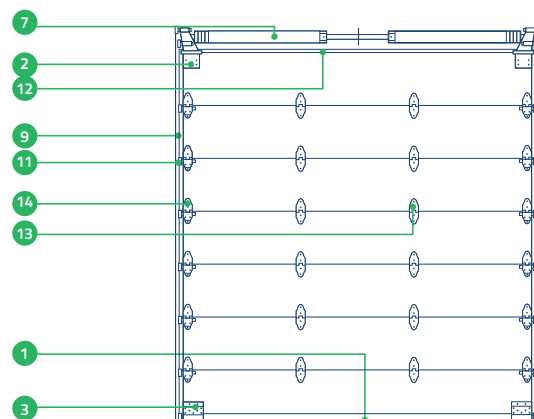
**13** Centre hinge incorporates contoured design to prevent hinge from damaging cargo.



**14** End hinge and roller carrier. Removable cap allows roller change without removing hinge.

## Standard Features

- 54mm thick panels built with aluminum facings inside and out for easy cleaning and excellent acceptance of paint and decals.
- No rivets on face of door to interfere with lettering or decals.
- Aluminum extruded panels. 1.8mm thick resist puncture.
- Foam-in-place urethane insulation.
- Panel joints are double sealed.
- Rigid bottom channel has thermal break which runs entire width of door.
- 2 cable balancer with independent springs for each cable. Springs treated with rust preventative.
- All rollers can be easily changed without removing hinges.
- All door hardware e-coated. (Automotive quality corrosion protection.)
- 4 rows of hinges.





# ROBUST ROLLER DOORS FOR A MORE EFFICIENT TRANSPORT INDUSTRY

## **Whiting Roller Doors** **Hinged Truss II Dry Freight Door**

Choose your roller doors wisely. They'll be opened and closed thousands of times, they'll protect the contents of thousands of shipments and they'll directly impact your reputation on the road.

Structurflex is the New Zealand agent for Whiting Roller Doors, a US brand that's globally recognised for superior design and durability. Whiting doors provide the features you need – top, bottom and side seals, heavy-duty panels and hardware, and quick, easy operation.



# WHITING HINGED TRUSS II DRY FREIGHT DOOR



The only door that will actually outlive your vehicle! Double wall aluminum extruded panels form a truss to make this durable Whiting Hinged Truss II Dry Freight Door the strongest door available. This superior door readily accepts automotive quality paint and decals. Equipped with a 50mm roller and a 50mm track to withstand rough service.

## Standard Features

- Double wall extruded aluminum panels.
- Sealed tongue-and-groove joints.
- Top, bottom and side seals standard.
- 4 rows of hinges.
- Patented roller-change hinge design.
- 2 cable balancer with independent springs for each cable. Springs treated with rust preventative.
- Cam-type lock.
- All door hardware e-coated. (Automotive quality corrosion protection.)
- Heavy duty, 50mm, 13 gauge track.



**1**  
Heavy duty bottom roller bracket designed for easy rolling.



**2**  
2 cable balancer with independent springs for each cable. Springs treated with rust preventative.



**3**  
Cam lock allows one hand operation. Easily accommodates padlock or car seal.



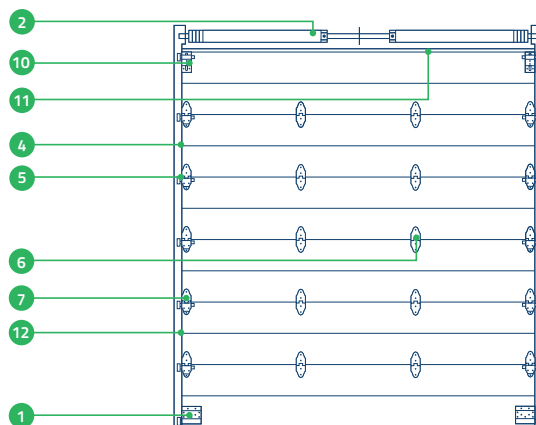
**4**  
50mm, 13 gauge galvanized steel track with tongue-and-groove for precision alignment at joints.



**5**  
50mm nylon roller for strength and long life.



**6**  
Centre hinge incorporates contoured design to prevent hinge from damaging cargo.



**7**  
End hinge and roller carrier. Removable cap allows roller change without removing hinge.



**8**  
PVC joint cover guards against oxidation streaking. Sloped design with weather seal keeps moisture out.



**9**  
Bottom panel is fitted with a rubber seal to provide protection from the elements.



**10**  
Top closure bracket can easily be adjusted to ensure top panel provides tight seal at top of door.



**11**  
Vinyl top seal standard.



**12**  
Brush side seals provide superior protection from the elements.

